

App for the Trisa Electronics Bluetooth devices



The MedM Health app is for both android and iOS. Depending on the operating system, you will find our app on Google Play (Android) or the App Store (iOS), or scan the QR code. Then you can download MedM Health and install it on your smartphone or tablet.

If your device doubts the trustworthiness of the new app, you can solve the problem as follows:

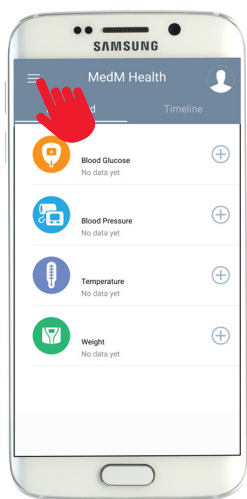
iPhone:

Go to Settings/General/Profiles and allow the app.
Remember to switch on the Bluetooth function.

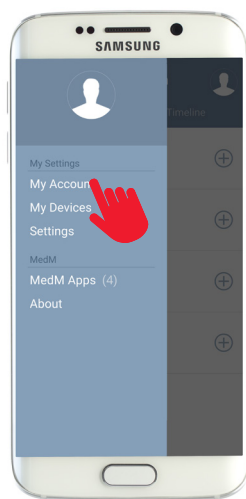
Android:

Go to Settings/apps/MedM Health and allow the app.
Remember to switch on the Bluetooth function.

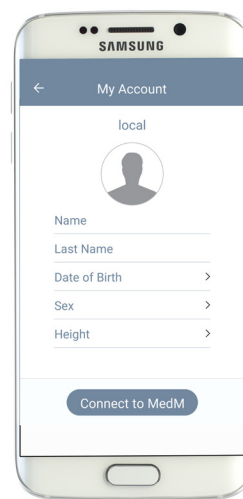
Enter personal information



Open the newly installed MedM Health app.
Tap on the Menu button in the top left.

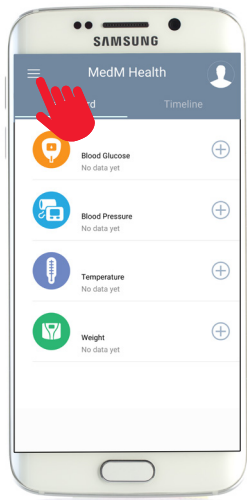


Tap on "My Account".

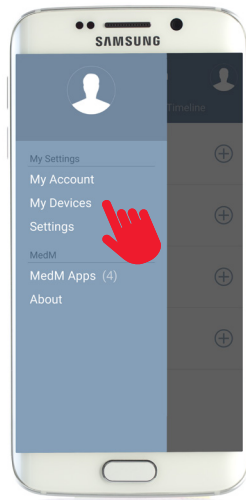


Here you can enter your personal details such as height and weight. This is important so that the BMI (Body-Mass-Index) is calculated properly.

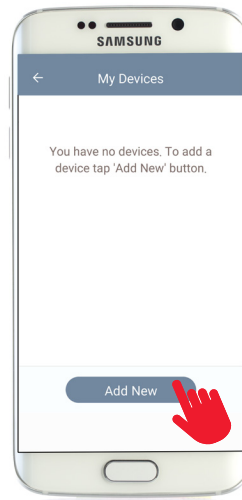
Installing of Trisa Electronics Bluetooth devices



Open the newly installed MedM Health app.
Tap on the Menu button in the top left.



Tap on "My Devices".



Tap on "Add New".
The app will now search for new devices.
Now you must press the connection button on the device you want to add for approx. 5 seconds.

Where are the connect buttons on the devices?

Pedometer
„3D Activity Tracker“



On the side of the display

Blood pressure monitor
„Simple Wrist 4.0“



„START | STOP“ button

Blood pressure monitor
„Cardio Pro 4.0“



„Subject 2“ button

Body fat scale
„Easy Scale 4.0“



On the reverse

Body fat scale
„Body Analyze 4.0“



On the reverse

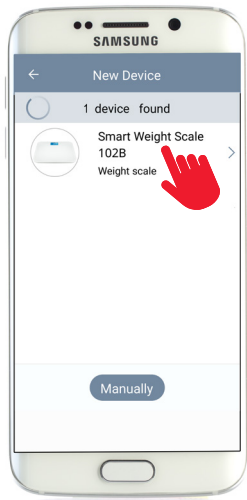
Important

The connect button must be pressed for approx. 5 seconds.

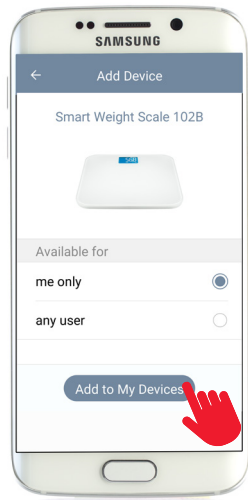


As long as the device is connecting to the app, this icon appears on the display

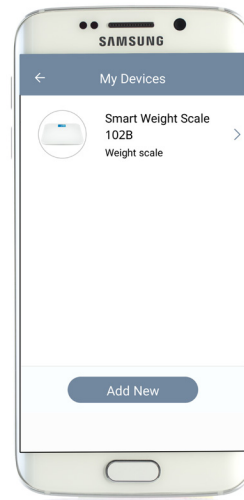
Installing of Trisa Electronics Bluetooth devices



The device now appears in the display. Now tap on the device.



Select whether the device is to be available only to you or for all other users. Then tap „Add to my devices“



The device is now available under „My Devices“. Here you can also change the name of the device, if you wish to. If you wish to add further devices, simply tap on “Add” again.

